

# 2024



STRENGTHENING  
COMMUNITY,  
SHAPING THE  
FUTURE



CLAREMORE  
STARTS HERE



**2** Business Attraction,  
Expansion, and Retention

**6** Talent Development

**11** Claremore Regional Airport

**13** About Us

## Letter from the Chair

As another year comes to a close, I find myself reflecting on 2024 with immense gratitude and pride. One word rises above all others to define this year: partnership.

This spirit of partnership shone brightly in May when our community faced the devastating impact of an EF3 tornado. In the immediate aftermath, businesses and individuals alike mobilized to provide meals, assist with cleanup efforts, and ensure resources and information were readily available.

This same spirit of partnership was evident in our talent development initiatives throughout the year. The Rogers County Technical Training Scholarship has now supported nearly 180 residents in completing degree programs, equipping them with critical skills for long-term career success. Additionally, we launched an innovative Career Exploration Course for seventh and eighth-grade students, exposing them to a wide range of career opportunities and fostering direct connections with local business leaders. These efforts, championed by our education partners, are making tangible strides toward cultivating a robust talent pipeline for the future.

I am incredibly proud that Claremore Economic Development's workforce programs received three prestigious awards this year in recognition of these impactful initiatives. These honors underscore the remarkable achievements possible when we work together toward shared goals.

I extend my deepest gratitude to everyone who has contributed to our collective successes this year. Together, we are creating a brighter future for Rogers County and laying the groundwork for future generations.

As we prepare for 2025, the partnerships we have fostered will continue to propel us forward. Together, we will achieve even greater success for our community and its future generations.

Sincerely,



Jerry Schivally  
Chairman | Claremore Economic Development



# Business Attraction, Expansion and Retention

Each year, Claremore Economic Development works with partner organizations across Oklahoma to position Rogers County as a prime business destination. A cornerstone of our mission is attracting and retaining companies that provide quality job opportunities for our residents while strengthening the local economy through sales tax and ad valorem growth.

The Claremore Industrial Park is a key asset, offering an optimal location for large-scale industrial operations. Guided by a focus on target industries—those that align with our region’s existing businesses or can be supported by our skilled workforce—our team strategically seeks businesses that enhance the regional economy.

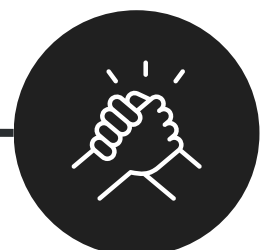
Each year, we carefully assess and respond to select requests for proposals (RFPs) from companies evaluating locations across the state or nation. By analyzing critical factors like infrastructure, location, and industry fit, Claremore Economic Development ensures Claremore aligns with both the prospective business’s goals and the community’s aspirations.

Through strategic planning and intentional action, CED continues to make Rogers County a thriving hub for business success and community advancement.



## Strategic Industry Focus: Driving Growth in Claremore, Oklahoma

Claremore strategically targets advanced manufacturing, automotive components, electronics, food processing, and healthcare. This focus builds on the region’s unique strengths: existing industries, a skilled workforce, and critical infrastructure, creating a strong foundation for sustainable growth.





# Business Attraction, Expansion and Retention

## \$632,308.86

2024 Sales Tax Contributions Resulting From National Retail Businesses Recruited by Claremore Economic Over Past Three Years

\*Harbor Freight, Wendy's, ALDI, Tropical Smoothie Cafe, Dutch Bros, Bealls Outlet

More than 8% increase from 2023



## Target Industry Alignment

Claremore identifies industries that align with its existing businesses and workforce capabilities. By analyzing key industries in our and leveraging regional talent, Claremore creates a foundation for sustainable economic growth.



## Strategic Location and Infrastructure

The Claremore Industrial Park offers unique connectivity, providing companies rail, barge, and air access within 15 miles of the park. Intermodal transportation is crucial for advanced manufacturing, automotive components, and food processing industries. Essential municipal resources, including water and wastewater systems, ensure seamless business operations, making Claremore an ideal destination for growth.





# Business Attraction, Expansion and Retention

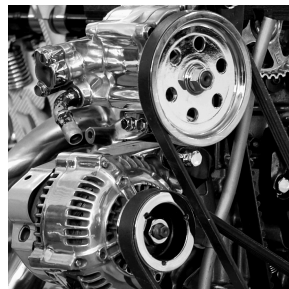


## Claremore's Target Industries and Advantages



### ***Advanced Manufacturing and Metal Forging***

With a strong base in aerospace, agriculture, and metals, Claremore is a hub for advanced manufacturing and metal forging, fostering innovation and growth through regional expertise.



### ***Automotive Components and Electronics***

At the crossroads of major transportation routes and supported by a skilled workforce, Claremore is ideal for component manufacturing, assembly, and distribution, offering innovation and accessibility.



### ***Food Processing***

Access to agricultural resources and streamlined supply chains gives food processing companies a competitive edge, ensuring efficient operations and market reach.



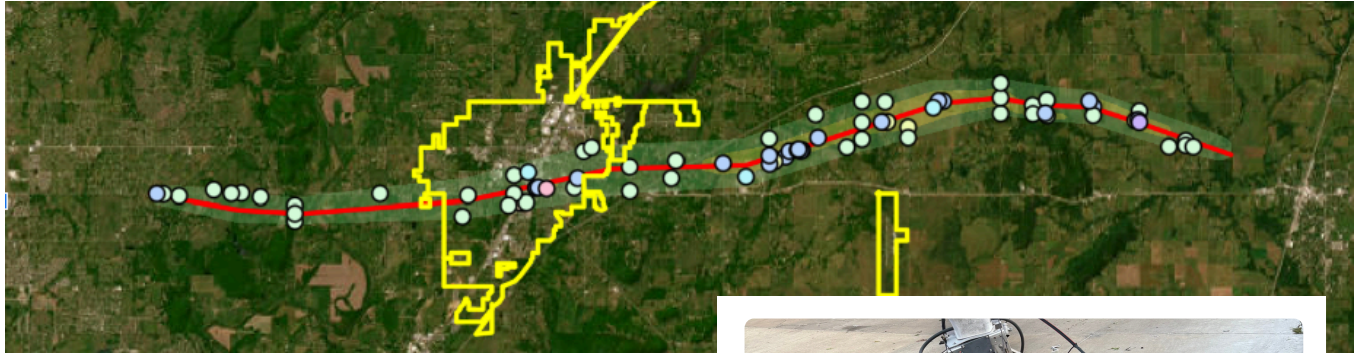
### ***Healthcare***

Claremore prioritizes quality of life by fostering a strong healthcare ecosystem, supporting a healthy and productive workforce to strengthen economic resilience.

# Business Attraction, Expansion and Retention



## Supporting Claremore's Business Community Through Resilience and Recovery



Following the May 25, 2024 tornado, the Claremore Economic Development team played a key role in supporting the recovery of local businesses and industries. Leveraging strong partnerships and resources, our team worked to address immediate challenges and facilitate long-term recovery efforts.



In collaboration with the Claremore Area Chamber of Commerce, Claremore Economic Development launched the Disaster Business Resource Hub, an online platform providing essential resources, business support, and key contacts. This tool became a vital resource for businesses navigating the recovery process, offering streamlined access to critical information and assistance.

Additionally, CED staff conducted damage assessments and worked directly with impacted businesses to identify needs and deliver timely solutions. These efforts were part of a coordinated response to ensure businesses had the support required to recover efficiently and effectively.

In recognition of these efforts, the **Claremore Chamber of Commerce honored our team with the Good Neighbor Award**, highlighting the collective commitment to fostering a resilient and connected business community. In addition, the team has been invited to serve on the National Committee on Best Practices for Rural Recovery for Natural Disasters Committee for the Economic Development Administration.



# Talent Development

## Rogers County Technical Training Scholarship Fuels Career Growth for Second year

In 2024, Claremore Economic Development, in partnership with Rogers County and Northeast Tech, announced an expansion of the transformative Technical Training Scholarship Program, allowing residents to complete approved technical programs at no cost.

Building on the success of the program's pilot year, the Department of Commerce awarded additional funding to support a second cycle and broaden the program's scope. This program includes a diverse range of programs in Healthcare, Manufacturing, Education, Information Technology, Trades, and Business, targeting current and future workforce skill gaps identified in Rogers County.

189

Individual Scholarships  
Awarded

\$270,854.58

Scholarship Funding  
Amount Awards

74%

Awardees Low-to-  
Moderate Income

## Top Programs By Enrollment





# Talent Development

## Empowering the Future: How Community Partnership Is Transforming Workforce Education

Rogers State University, in collaboration with Claremore Economic Development, was among 27 business and higher education partnerships across Oklahoma recognized for their innovative contributions to workforce education. The partnership earned the prestigious Regents Business Partnership Excellence Award for its 2023 Micro-Credential Scholarship Program, which provided funding for more than 20 Rogers County residents to gain specialized training through micro-credential courses.

Presented by the Oklahoma State Regents for Higher Education, this award honors successful collaborations between higher education institutions, businesses, and communities. Supported by the State Regents' Economic Development Grants, these partnerships play a vital role in strengthening workforce development and expanding access to education.

Collaboration between universities, businesses, technical training centers and community organizations is essential for preparing a skilled workforce for the future. By nurturing these partnerships, we create opportunities that empower both students and professionals.

A notable example of this is the Rogers County Technical Training Program,



which recently earned a Gold Rank at the International Economic Development Council's Excellence in Economic Development Awards. This prestigious recognition highlights the partnership's leadership in talent development and its substantial impact on workforce innovation and educational progress. Further solidifying its impact, the initiative led to Claremore Economic Development being named the 2024 Northeast Tech Partner in Progress. These achievements highlight the power of collaboration in shaping a workforce that meets the evolving demands of tomorrow's industries. By aligning education and industry, we pave the way for sustained economic growth and long-term success.



# Talent Development

## Engineering Summer Internship Program: Shaping the Future of Northeast Oklahoma's Workforce

This summer, twelve students from Northeast Tech's Pre-Engineering Program had the opportunity to dive deep into the world of engineering through the Engineering Summer Internship Program. The four-week immersive experience introduced students to a wide range of engineering opportunities across Northeast Oklahoma.

Throughout the course, students had the chance to explore and connect with business and industry leaders, learning from some of the state's top engineering minds.

They received hands-on training in industrial maintenance, welding, and professional development, which were complemented by visits to local and regional businesses, including Baker Hughes, MST Manufacturing, NXTNano, Rye Design, GH2 Architects, QuikTrip, and Wallace Design.



### ***Preparing Claremore's Future Workforce: Speed Interviews Event***

Claremore Economic Development was honored to partner with Claremore High School for the inaugural Claremore Speed Interviews, equipping over 120 students with invaluable skills for career and scholarship opportunities!

This event provided invaluable interview preparation for students preparing them for summer internships, job interviews, scholarship opportunities and more.

Students also learned about the educational pathways available at secondary institutions offering engineering degrees, helping them make informed decisions about their future. In addition to the technical skills they developed, students earned valuable certifications, including First Aid/CPR and OSHA10, further enhancing their preparedness for the workforce.



# Talent Development

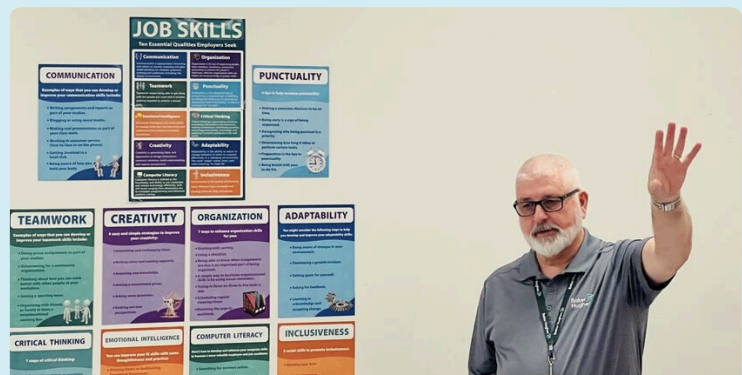
## Empowering the Workforce of Tomorrow Through Career Exploration

Recognizing the growing regional workforce demands, Claremore Economic Development partnered with Sequoyah Public Schools and Northeast Tech to launch an innovative career exploration program, Sequoyah Career Connections. This initiative equips students with the knowledge and resources to make informed decisions about their future educational and professional journeys.

Designed for seventh and eighth-grade students, this 17-week elective course offers hands-on exposure to various career possibilities. Approximately 30 Sequoyah Middle School students engaged with experts from multiple sectors, including human services, health sciences, engineering, manufacturing, agriculture, communications, arts, and business. Each career cluster features a speaker from a local company, providing students with firsthand insights into industry trends and potential employment options.

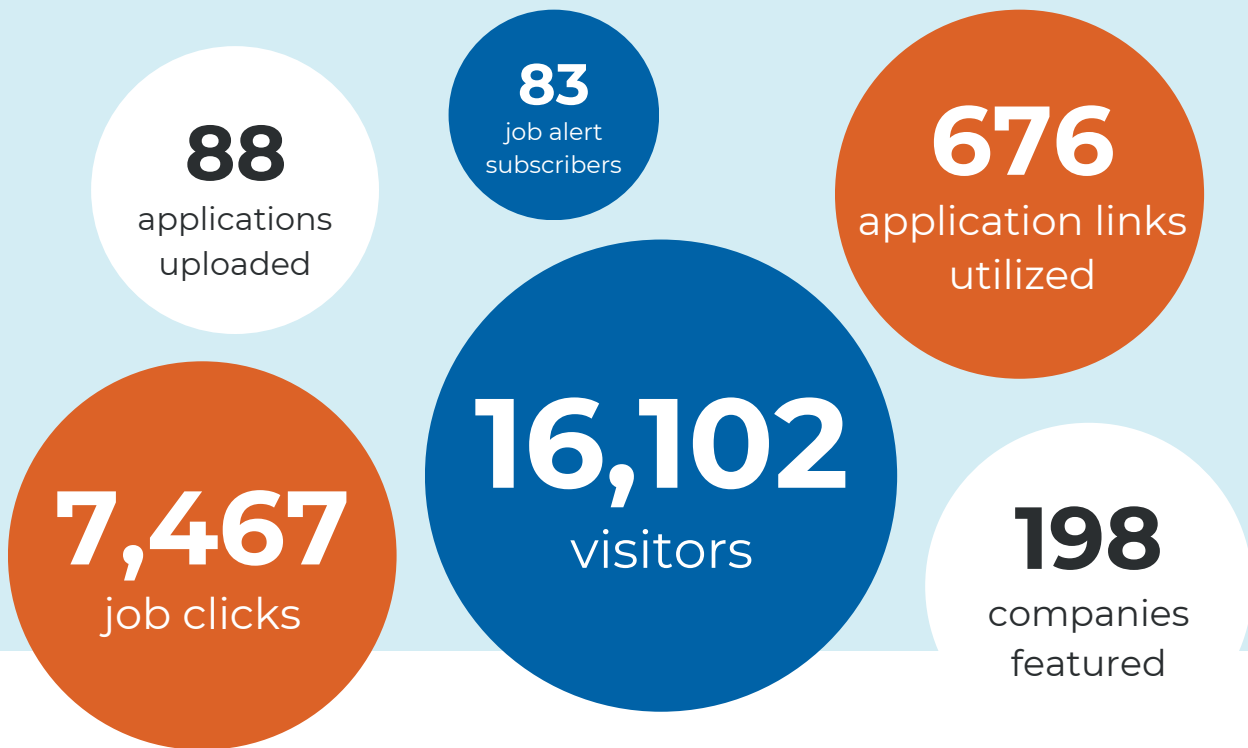
**“The guest speakers are engaging and make different career options feel more real and tangible.”**

- Cullen, Sequoyah Public Schools Student





# Talent Development



## Empowering Local Talent and Driving Workforce Growth Through Rogers County Career Portal

Claremore Economic Development is proud to play a pivotal role in fostering local workforce growth through the Rogers County Career Portal, an innovative and accessible tool designed to connect talent with opportunity. The Career Portal, available at [careers.morestartshere.com](https://careers.morestartshere.com), serves as a centralized job board, showcasing opportunities from 198 local companies. This user-friendly platform eliminates the need for job seekers to navigate overwhelming national job sites, offering direct access to a wide range of local positions across industries.

For businesses, the portal simplifies the hiring process, helping them connect with skilled candidates who are eager to contribute to Rogers County's economic vitality. By streamlining recruitment efforts, the Career Portal bolsters local manufacturers and businesses, ensuring they have the workforce needed to drive growth and innovation.



**Discover the Rogers  
County Career Portal**

# Claremore Regional Airport

## Claremore Regional Airport Soars to New Heights with Major Improvements and Strong Vision for the Future

Spanning 565 acres, the Claremore Regional Airport is a premier destination for aviators throughout Northeast Oklahoma. It features 39 private hangars, 25 T-hangars, and two large common hangars and is home to 86 base aircraft. In 2024, the airport recorded approximately 12,380 operations.

In 2024, the Claremore Regional Airport achieved significant milestones in enhancing tenant services and optimizing operations, setting the stage for a future of growth and innovation. A new texting service was launched to improve communication, enabling quick dissemination of important announcements such as facility closures, infrastructure updates, and key operational notices.

**12,380** ANNUAL OPERATIONS

**~\$13.3M** IN IMPROVEMENTS OVER THE NEXT 5 YRS

**\$50,000** PLANNED FBO RENOVATIONS IN 2025

**\$304,790** FUEL TRUCK

**\$1.2M** NEW HANGAR BUILDING

The airport also revamped its website, introducing features like weekly fuel price updates, easy access to tenant resources, event sign-up links, and other useful information.

Safety and operational standards were also a top priority. The airport updated its Standard Operating Procedures (SOPs), enhanced its airfield training manual, and implemented FAA Part 139 fuel training to ensure compliance and improve airfield operations and fuel handling protocols.



# Claremore Regional Airport

The airport's FY26-FY30 Capital Improvement Plan (CIP) has been updated to include approximately \$13.3 million in improvements over the next five years. A new commercial box hangar, measuring 100ft x 60ft, is set to be completed in 2025. The current construction phase, involving the relocation of utility lines, is nearing completion, and the next step will be pouring the concrete drainage channel and hangar pad.



Additionally, a comprehensive overhaul of the airport's septic system will soon be completed to ensure long-term sustainability.

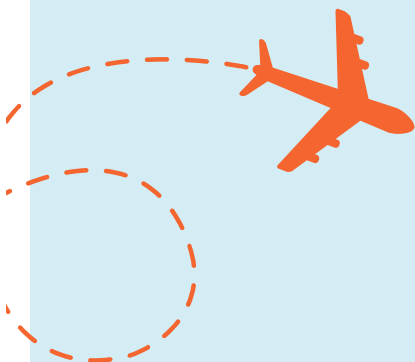
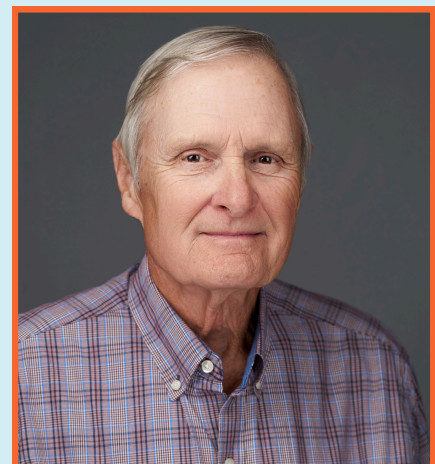


The airport is also strengthening its advocacy efforts with tenants, the City of Claremore, the Oklahoma Department of Aeronautics (ODAA), and the FAA, building momentum for its continued growth and success.

With a clear vision, a robust development plan, and a commitment to excellence, Claremore Regional Airport is poised for an exciting future. As it continues to expand, innovate, and deliver exceptional service, the airport is ready to soar to new heights, proving that the sky truly is the limit.

## Thank you Jimmy!

The Claremore Regional Airport wishes to congratulate Jimmy Hensley on his retirement and thank him for 11 dedicated years of service to KGCM!





# About Us

Claremore Economic Development is a public trust organization established in 1948 under Oklahoma state law to adequately use economic resources and stimulate economic growth and development for the City of Claremore and Rogers County. The organization facilitates the recruitment, retention, and expansion of primary industry jobs and the sales tax base through the recruitment of new destination retail businesses.

## Trustees



**Jerry Schivally**  
**Chairman**  
Vice Chairman,  
Integrated Service  
Company, LLC



**Brian Green**  
**Vice Chairman**  
President,  
GC Enterprises



**Amy Stutzman Fortna**  
**Secretary/Treasurer**  
Founder and Managing  
Director for Waymark  
Advisors



**Gary Collins**  
**Trustee**  
Production Manager,  
CF Industries



**Tim Fleetwood**  
**Trustee**  
Owner, Love Air  
Conditioning, LLC



**Ryan Neely**  
**Trustee**  
Financial Advisor,  
Neely Agency



**Bryan Frazier**  
**Trustee**  
Superintendent,  
Claremore Public  
Schools

### Our Mission

**Claremore Economic Development drives economic advancements for Rogers County by supporting and recruiting aligned businesses for mutual prosperity.**

# About Us

## Staff



**Meggie Froman-Knight**  
Executive Director



**Silas Ellis**  
Talent Development Manager



**Bailey Thompson**  
Development Initiatives and Finance Manager



**Brianna Stinnett**  
Economic Development Associate



**Kaleigh Hossack**  
Communications Manager



**Colby Linder**  
Airport Manager



**Jimmy Hensely**  
Claremore Regional Airport Line Attendant



**Nathan Trimble**  
Claremore Regional Airport Line Attendant

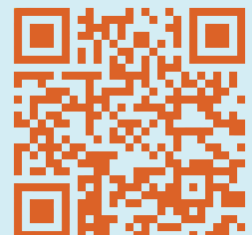
\*For more information on the Claremore Economic Development, including financial statements, meeting dates, staff contact information and other exciting announcements, visit [www.MoreStartsHere.com](http://www.MoreStartsHere.com).



# CLAREMORE STARTS HERE



[www.MoreStartsHere.com](http://www.MoreStartsHere.com)



Career Portal